

Ricoh Aficio MP9000/MP1100/MP1350
Multifunction Digital Imaging Systems
Making Speed Work

RICOH

fast



dependable



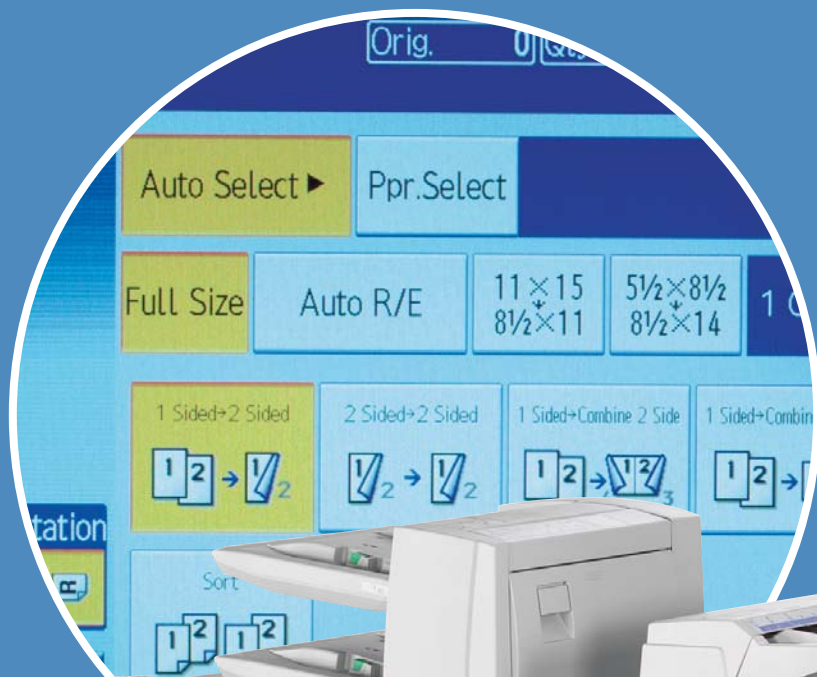
flexible



Aficio MP9000/MP1100/MP1350

Built for the Long Run

With output speeds of up to 135 pages per minute and durability to match, the RICOH Aficio MP9000/MP1100/MP1350 systems can dramatically expand the capabilities of your workplace. These production-quality systems are built to keep going and going, page after page, minimizing downtime, maximizing productivity across your organization and just plain making your workday a little easier.



The Super VGA Color Touch Panel Display is easier to read and enables you to view scanned documents in color, right on the screen.



Fast Dependable Reliable

Reliability you can count on.

The Ricoh Aficio MP9000/MP1100/MP1350 systems are designed to produce the highest quality output—up to 1,200 dpi—in the least possible time. And when you consider their amazing top speeds, their accomplishments are all the more remarkable.

- Take advantage of high-speed printing with exceptional reliability. New Stepper Motor Feed System Technology dramatically reduces gaps between sheets, enhancing reliability and pushing the top speed to 135 ppm—making the Ricoh Aficio MP9000/MP1100/MP1350 systems the fastest Ricoh MFPs ever.
- Print without worrying about downtime and get jobs done on time, every time. Multiple sheets of paper in the feed system are automatically identified by the Multi-Feed Detection System and removed before they can cause problems.
- Copy at high resolutions and fast production speeds with a limitless paper supply and access all of the standard and optional functions you need to get desired results.
- Keep your jobs in-house. Ricoh Aficio MP9000/MP1100/MP1350 systems can handle virtually any kind of paper up to 13" x 18" and up to 80 lb. Cover—including recycled, pre-punched, cardstock, bond, transparencies and tab stock.
- Finish your documents exactly the way you want by selecting from a wide range of output devices:
 - Now even saddle-stitching and a Z-Fold option are available, eliminating the cost, wasted time and slower turnaround of outside vendors
 - On-line punching with the new GBC StreamPunch™ III eliminates 50% of the labor that it normally takes to produce bound books
 - The dual-tray Interposer, allows you to feed stock without sending it through the fuser, easily adding preprinted inserts or covers to your finished documents
 - High speed finishing capabilities include a new saddle-stitch unit that makes booklets at the rated speed of the MFP
 - New technology enables faster, more reliable duplex printing and copying.

Protected. Secure. Safe.

The Ricoh Aficio MP9000/MP1100/MP1350 systems are protected with some of the most sophisticated security measures available, including:

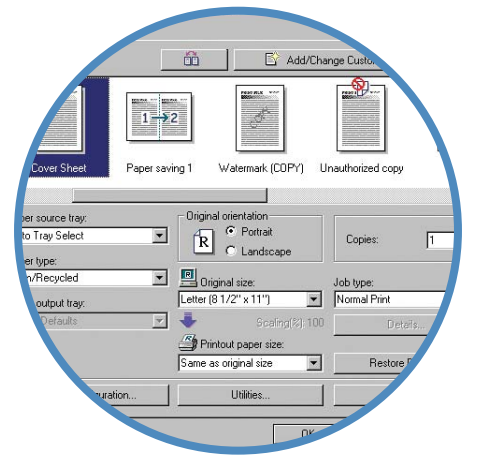
- The DataOverwriteSecurity System (DOSS)—automatically overwrites latent information on the hard drive after every copy, print and scan job. It's the same security methodology that the National Security Agency uses to secure information remaining on digital system hard drives.
- Multiple Network/User authentication provides full control and active management across your organization.



Save time and money by creating professional-looking booklets in house. The Ricoh Aficio MP9000/MP1100/MP1350 systems, combined with the BK5010 Production Booklet Maker, are the only MFP's in their class to offer square edge book folding.



With Ricoh's new Trained Customer Replacement Unit (TCRU) design, a variety of components can be changed by trained operators, keeping production interruptions to a minimum and maximizing system uptime and availability.



RPCS is an easy-to-use icon-based print driver that enables you to apply and save special settings for one-click job processing.

PrintScanNetworkE-mail

Easy, user-friendly operation.

The Ricoh Aficio MP9000/MP1110/MP1350 systems provide high performance without high complexity.

- Program your copy or scan jobs quickly and easily with the large, easy-to-read graphics on the Super VGA Color Touch Panel Display. It's even easy for walk-up users to navigate the options.
- Minimize mistakes by first reviewing expanded preview images of scanned data before you send them through scan-to-email.
- Simplify last-second adjustments to your work by editing right at the printer in a variety of ways, including creep adjustment (shifting images slightly in the middle of booklets to improve readability); mixing one- and two-sided originals; and using Bates numbering.
- Manage system functions quickly and easily right from your desktop with Ricoh's WebImageMonitor utility, which lets you check toner and paper levels, as well as change print queues, merge jobs, receive e-mail error notifications and much more. And @Remote Intelligent Remote Management System automatically reports usage meter data, freeing up staff time for more essential tasks.

Create the system that's right for you.

No one does business exactly like you. To maximize your efficiency, you need a system that can be configured to your own requirements. That's why Ricoh Aficio MP9000/MP1100/MP1350 systems are designed to be as simple or as complex as you need them:

- Cut your time spent at the MFP and begin scanning in high-speed color. Any multifunctional device can scan black-and-white images, but Ricoh Aficio MP9000/MP1100/MP1350 systems can scan color images as well—at exceptionally high speeds—and then e-mail or send them to an FTP site for easy distribution.
- Enjoy unmatched media flexibility with Ricoh's universally designed paper trays. These allow you to choose paper automatically based on the job you send to the MFP. So whatever you feed in to the Ricoh Aficio MP9000/MP1100/MP1350 systems, you'll get high-speed output.
- Automate more of your workflow in-line through the robust selection of versatile Ricoh finishing options such as booklet making and Z-Fold capability.
- Work with your own software providers to create software that configures operations to your exact specifications.



Your Partner in Environmental Solutions

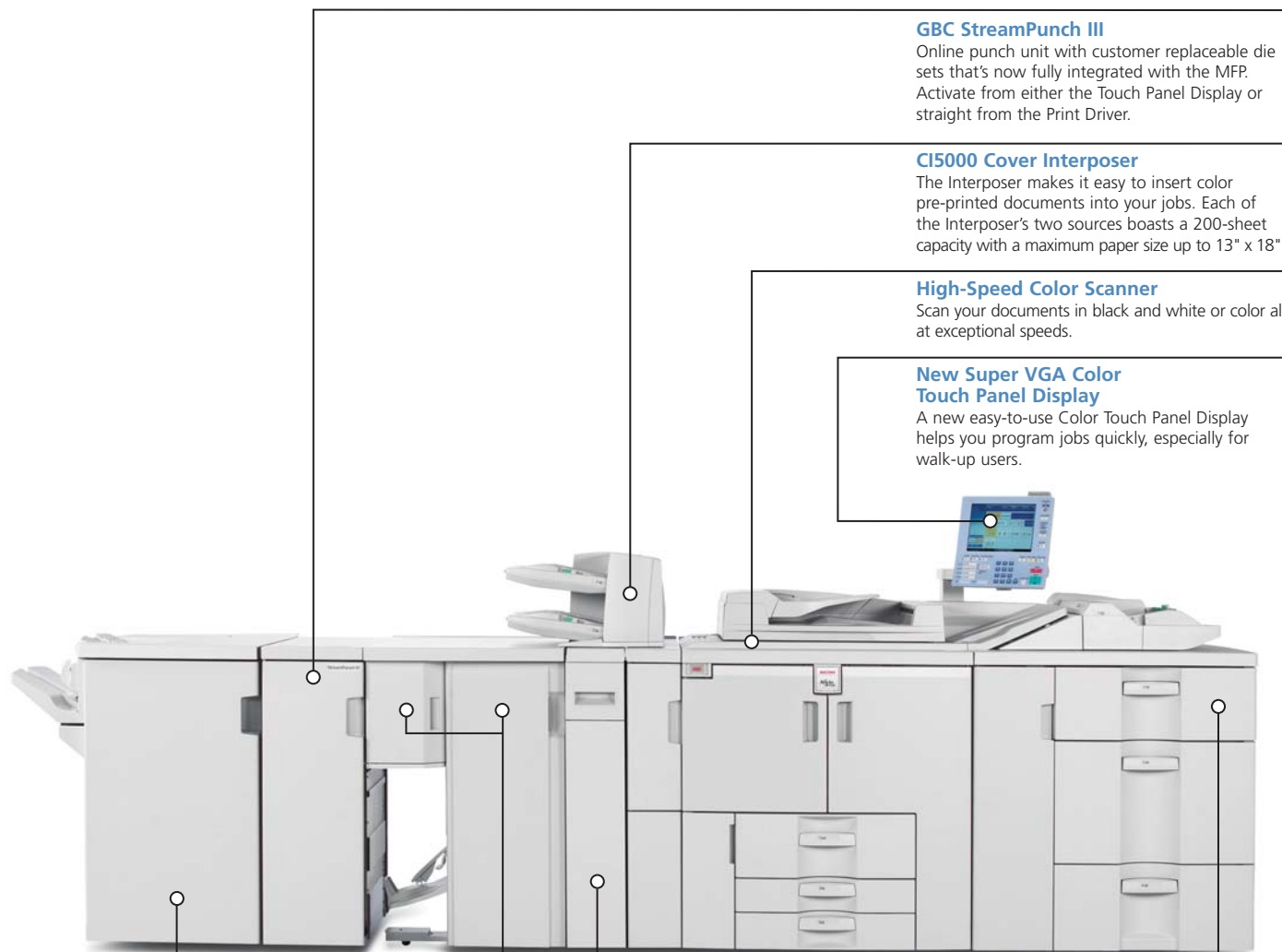


This Energy Star® compliant system continues a longstanding commitment to developing office solutions with superior energy and supply-saving features, including:

- Quick Start-Up (QSU) Technology
- Power-saving Sleep Modes
- Duplex and Combine Copy Modes
- Toner Recycling
- Low Noise Levels
- Minimal Ozone Emissions
- Restriction of Hazardous Substances (RoHS)

Configure to Your Needs

The MP9000/MP1100/MP1350 systems allow you to configure the system to handle the way you work. This is made possible with a host of flexible finishing options, as well as Ricoh Embedded Software Architecture (ESA) – a flexible and open Java-Based scalable platform.



SR5000 Finisher

Staples up to 100 sheets in multiple different positions and now supports finishing paper sizes up to 13" x 18".

BK5000 Saddle Stitch Unit

New finishing technology enables the BK5010 to create booklets of up to 15 sheets (60 pages) all at rated speed of the MFP.

ZF4000 Z-Fold Unit

Integrated feature that provides the ability to have larger sheets of paper Z-Folded online into your presentations. Engineering specifications and schematics are just some of the applications that are perfect for the new ZF4000.

New RT5010 DLT/LCT

Provides a choice of Large Capacity Trays for feeding all types and sizes of documents, including up to 13" x 18" sized paper. Universally designed paper trays support the same sizes and weights (16 lb. Bond-80 lb Cover) across the entire system.

GBC StreamPunch III

Online punch unit with customer replaceable die sets that's now fully integrated with the MFP. Activate from either the Touch Panel Display or straight from the Print Driver.

CI5000 Cover Interposer

The Interposer makes it easy to insert color pre-printed documents into your jobs. Each of the Interposer's two sources boasts a 200-sheet capacity with a maximum paper size up to 13" x 18".

High-Speed Color Scanner

Scan your documents in black and white or color all at exceptional speeds.

New Super VGA Color Touch Panel Display

A new easy-to-use Color Touch Panel Display helps you program jobs quickly, especially for walk-up users.

Ricoh Aficio MP9000/MP1100/MP1350

Specifications

Aficio®

General Specifications

| | |
|--------------------------------|--|
| Warm-up Time | Less than 360 seconds |
| Standard Paper Weights | 16 lb – 40 lb Bond 50 lb – 80 lb Cover 90 lb -110 lb Index |
| Standard Paper Capacity | Tray 1: 1,000 sheets x 2 Tray 2: 500 sheets Tray 3: 500 sheets |
| Standard Paper Capacity | 3,000 sheets |
| Power Source | 208 – 240V, 50/60Hz, 20A (Requires Dedicated Outlet) |
| Power Consumption | Aficio MP9000/MP1100: Less than 3,500W with LCT & Finisher Aficio 1350: Less than 4,000W with LCT & Finisher |
| Dimensions (WxDxH) | 34.3" x 33.9" x 58.2" (Main unit without a Finisher) |
| Weight | 672.4 lb. (Main unit without a Finisher) |

System Specifications

| | |
|------------------------------|--|
| First Copy | Aficio MP9000: 3.5 seconds Aficio MP1100: 3.2 seconds Aficio MP1350: 3.0 seconds |
| Copy Size | 5.5" x 8.5" to 13" x 18" |
| HDD Capacity | 160GB x 2 (320GB) |
| Reduction/Enlargement | 25% - 400% (in 1% increments) |

System Accessories

| | |
|--|---|
| Automatic Reversing Document Feeder | |
| Original Paper Weight | 11-34 lb Bond (Simplex) 14-28 lb Bond (Duplex) |

| | |
|--|--|
| RT5000 LT/LCT Large Capacity Tray | |
| Paper Sizes Supported | 5.5" x 8.5" – 8.5" x 11" |
| Paper Capacity | Tray 4: 1,000 sheets Tray 5: 1,000 sheets Tray 6: 2,550 sheets |

| | |
|----------------------|---|
| Paper Weights | Tray 4: 16 lb Bond - 80 lb Cover Tray 5: 16 lb Bond - 80 lb Cover Tray 6: 16 lb Bond - 90 lb Index |
|----------------------|---|

| | |
|---------------------------|-----------------------|
| Dimensions (WxDxH) | 21.2" x 28.7" x 38.5" |
| Weight | 194 lbs. |

| | |
|---|--|
| RT5010 DLT/LCT Large Capacity Tray | |
| Paper Sizes Supported | 5.5" x 8.5" – 13" x 18" |
| Paper Capacity | Tray 4: 1,000 sheets Tray 5: 2,000 sheets Tray 6: 1,000 sheets |

| | |
|----------------------|--|
| Paper Weights | Tray 4: 16 lb Bond - 80 lb Cover Tray 5: 16 lb Bond- 80 lb Cover Tray 6: 16 lb Bond – 90 lb Index |
|----------------------|--|

| | |
|---------------------------|-----------------------|
| Dimensions (WxDxH) | 34.7" x 28.8" x 38.6" |
| Weight | 194 lbs. |

SR5000 100-Sheet Finisher

| | |
|---------------------|---|
| Paper Weight | 16 lb Bond - 80 lb Cover |
| Proof Tray | 500 sheets (8.5" x 11") 250 sheets (8.5" x 14" or larger) |

| | |
|---------------------------|--|
| Shift Tray | 3,000 sheets (8.5" x 11" - LEF) 1,500 sheets (8.5" x 14" – 11" x 17" SEF) 1,000 sheets (12" x 18") 100 sheets (8.5" x 11") |
| Staple Capacity | 100 sheets (8.5" x 11") |
| Dimensions (WxDxH) | 31.5" x 28.7" x 38.5" |
| Weight | 165 lbs |

BK5000 Saddle Stitch Unit

| | |
|-----------------------------|------------------------|
| Paper Sizes Folded | 8.5" x 11" – 12" x 18" |
| Paper Weights Folded | 20-24 lb Bond |
| Dimensions (WxDxH) | 23.6" x 28.7" x 38.5" |
| Weight | 154 lbs. |

C15000 Cover Interposer

| | |
|------------------------------|--------------------------|
| Paper Sizes Supported | 5.5" x 8.5" – 13" x 18" |
| Paper Capacity | 2 x 200 sheets |
| Paper Weight | 17 lb Bond – 80 lb Cover |
| Dimensions (WxDxH) | 27.9" x 28.7" x 50" |
| Weight | 99.2 lbs. |

BY5000 Multi Bypass Tray

| | |
|------------------------------|--|
| Paper Capacity | 500 sheets (20 lb. Bond) |
| Paper Sizes Supported | 5.5" x 8.5" – 12" x 18" (RT5000) 5.5" x 8.5" – 13" x 18" (RT5010) |

PU5000 Punch Unit

| | |
|--------------------------|--------------------------------|
| Punch Type | 2 or 3 holes (User Selectable) |
| Punch | 16 lb Bond – 90 lb Index |
| Systems Supported | Aficio MP9000/MP1100 only |

GBC StreamPunch III

| | |
|------------------------------|--|
| Punch Type | Customer Replaceable Die Sets (7) |
| Paper Sizes Supported | 8.5" x 11" Long Edge Feed (11" side only) |

| | |
|---------------------------|--------------------------------|
| Systems Supported | Aficio MP9000/MP1100/MP1350 |
| Dimensions (WxDxH) | 12" x 28.5" x 38.5" |
| Weight | 154 lbs. |

Network Connectivity Options

Printer/Scanner Kit Type 1350

| | |
|------------------------|--|
| Windows Drivers | |
| RPCS | 95/98/ME/NT4.0/2000/XP/ Server 2003 |

| | |
|--------------|--|
| PCL5e | 95/98/ME/NT4.0/2000/XP/ Server 2003 |
|--------------|--|

| | |
|--------------|--|
| PCL 6 | 95/98/ME/NT4.0/2000/XP/ Server 2003 |
|--------------|--|

| | |
|-----------------------------------|--|
| Adobe PostScript3 (option) | 95/98/ME/NT4.0/2000/ XP/Server 2003 |
|-----------------------------------|--|

| | |
|----------------------------|--|
| Utilities Supported | WebImageMonitor Web SmartDeviceMonitor SmartDeviceMonitor Printer Utility for Mac IEEE1394 Utility USB Printing Support PDF Direct Printing (through DeskTopBinder) |
|----------------------------|--|

Printer Options

Interface

Host Printing Options

| |
|--|
| DeskTopBinder/ DeskTopBinder Lite ScanRouter/ScanRouter Lite IEEE1284 Interface Type A IEEE1394 Interface Type B IEEE802.11b Wireless Type B Gigabit Ethernet Type 7300 Bluetooth Interface Unit Type 3245 Document Output Technologies (DOT) RA2K Integration for IPDS OMS400 |
|--|

Scanner Specifications

| | |
|--|--|
| Scan Speed | 80 spm (black and white) 80 spm (color 200 dpi/LT) 100/150/200/300/400/600 dpi |
| Optical Resolution | 100/150/200/300/400/600 dpi |
| Resolution for Delivery Scanner | 100-1,200 dpi (color and black and white) |
| TWAIN Resolution | TIFF/JPEG/PDF and High Compression PDF |
| File Formats | SMTP Gateway and TCP/IP 2,000 addresses 500 addresses 100 addresses |

Scan-to-Email

| | |
|---------------------------------|-------------------------|
| Requirement | SMTP Gateway and TCP/IP |
| Email Addresses | 2,000 addresses |
| Max Address Per Send | 500 addresses |
| Address Support Via LDAP | 100 addresses |

Scan-to-Folder

| | |
|-------------------------------------|---|
| Protocol Support | SMB/FTP/NCP |
| Resolution | 100/150/200/300/ 400/600 dpi |
| Max. Client Folders Per Send | 50 Client Folders |
| File Types Supported | Single Page TIFF/JPEG Single Page PDF Multi Page TIFF Multi Page PDF High Compression PDF |

Security

| | |
|-----------------------|---|
| Authentication | Windows Authentication LDAP Authentication Basic Authentication |
|-----------------------|---|

Secure Socket Layer Support

| | |
|---|--|
| Network Protocol On/Off | |
| SNMP v3 Support | |
| PDF Encryption | |
| Driver Encryption Key (PCL/RPCS Driver) | |
| Copy Data Security System E | |
| Data Overwrite Security Unit (DOSS) Type F | |

Additional Options

| |
|---|
| BK5010 Production Booklet Maker TR5010 Trimmer Unit CF5010 Cover Feeder Unit BF5010 Book Folder Fiery EB-135 Print Controller PrintStation 0135R MicroPress Connectivity |
|---|

RICOH

Ricoh Corporation Five Dedrick Place, West Caldwell, NJ 07006
Ricoh® is a registered trademark of Ricoh Corporation. Windows® and Windows® 95/98/Me/NT4.0/2000/XP are registered trademarks of Microsoft Corporation. Macintosh®, Mac® OS and AppleTalk® are registered trademarks of Apple Computer, Inc. Adobe® and PostScript® are registered trademarks of Adobe Systems, Inc. RPCS™ is a trademark of Ricoh Company, Ltd. All other trademarks are the property of their respective owners. Printed in U.S.A. on recycled paper. Print speed may be affected by network, application or PC performance. Specifications and external appearances are subject to change without notice. Products are shown with optional features. CA-0532

PLOCKMATIC
International AB

